



EVERGREEN ENVIRO ENGINEERING COMPANY

About Us

One-Stop Solution for All Water and Waste water Problems

At Evergreen Enviro Engineering Company, We are Dedicated to Addressing all your Water and Wastewater Challenges with Effective and Sustainable Solutions. Whether you Need STP (Sewage Treatment Plant) or ETP (Effluent Treatment Plant), Spares, UF (Ultra Filtration), RO (Reverse Osmosis) and Evaporators. We have you Covered with a Wide Range of High-Quality Supplies.



ETP



STP



UF



Reverse Osmosis



Evaporators

Preface

At Evergreen Enviro Engineering Company, We Believe that Sustainable Water Management is the cornerstone of a healthier planet. Our approach combines innovation, expertise, and a Commitment to Environmental Responsibility to Address the Growing Challenges in Water and Waste Water Management.

Vision

To Become a Trusted Leader in Sustainable Water and Waste Water Management, Promoting a Cleaner and Greener Environment.

Mission

To Provide Innovative and Eco-Friendly Solutions for Water and Wastewater Challenges, Ensuring Quality, Reliability, and Customer Satisfaction.

Services

- **Projects**
- **Revamping of ETP & STP, UF, RO & Evaporators**
- **Spares**
- **O&M(Operation & Maintenance) & AMC(Annual Maintenance Contract)**
- **Industrial RO Systems**

Projects

A "Water Treatment Project" Refers to a Planned Initiative to Design, Construct, and Operate a System that Removes Contaminants From Raw Water, Making it Safe for Consumption or Other Intended Uses, Typically Involving Processes Like Coagulation, Flocculation, Sedimentation, Filtration, and Disinfection, Depending On the Water Source and Desired Quality Level; Essentially, it's a Project to Build and Manage a Water Treatment Plant to Deliver Clean Water to a Community.

Revamping of ETP & STP,UF,RO & Evaporators

"Earth provides enough to satisfy every man's need, but not every man's greed."

– Mohandas K. Gandhi

Effluent Treatment Plants (ETP), Water Treatment Plants (WTP), and Sewage Treatment Plants (STP) are the Backbone of Zero Liquid Discharge (ZLD) Systems. These Systems are Vital for Sustainable Growth in Manufacturing Industries. At EGE, We Specialize in Building New Treatment Plants and Revamping Existing Ones to Ensure they Meet Modern Standards and Customer Requirements.

Our Revamping Services Include:

Filter Media Replacement: Enhancing System Efficiency by Upgrading Filter Media.

Equipment Upgrades: Providing and Installing Necessary Equipment to Improve Plant Performance.

Innovative Problem-Solving: Implementing Customized Solutions for Unique Customer Challenges.

Spares

Water Treatment Spares Refers to a Collection of Replacement Parts Used to Maintain and Repair Equipment within a Water Treatment Plant, Including Components like Filters, Pumps, Valves, Membranes, Gaskets, and other Essential Parts Necessary for the Continuous Operation of the Water Purification Process; Essentially, any Part that May Need to be Replaced Over Time to Ensure the Water Treatment System Functions Properly.

O&M (Operation & Maintenance)& AMC (Annual Maintenance Contract)

"O&M" stands for "Operations and Maintenance," Referring to the Day-to-Day Activities Required to Keep Equipment and Facilities Running Smoothly, Including Routine Inspections, Preventative Maintenance, and Necessary Repairs, While "AMC" Stands for "Annual Maintenance Contract," Which is a Service Agreement Where a Company Commits to Providing Scheduled Maintenance and Support for a Piece of Equipment Over a Set Period, Usually a Year, to Ensure Optimal Performance and Minimize Breakdowns; Essentially, O&M Encompasses the Ongoing Operational Tasks, While AMC is a Contractual Agreement to Perform Those Tasks on a Scheduled Basis Throughout the Year.

O&M Activities

- Daily Checks and Monitoring of Equipment
- Performing Routine Cleaning and Lubrication
- Identifying Potential Issues and Addressing them Proactively
- Responding to Emergency Breakdowns
- Maintaining Proper Documentation and Records

AMC Features:

- Scheduled Maintenance Visits Throughout the Year
- Coverage for Parts and Labour Costs
- Technical Support and Troubleshooting Assistance
- Potential for Preventative Maintenance Plans
- Periodic Performance Reports and Analysis

Industrial RO Systems

"Water is the driving force of all nature."

– Leonardo da Vinci

At EGE, We Specialize in Providing On-Site Industrial RO Services with the Help of Our Skilled and Trained Technicians. Our Comprehensive Services Ensure the Efficient Operation of Your Industrial RO Systems, Tailored to Meet Your Specific Requirements. Our Industrial RO Services Include:

Repairing RO Systems: Addressing any Damage to Restore Functionality.

Filter Replacement: Changing Wound Cartridges and Carbon Filters to Maintain Water Quality.

TDS and pH Testing: Ensuring Proper Water Treatment with Regular Checks.

RO Installation: Installing New RO Systems as per Client Requirements.

Chemical Cleaning: Cleaning Membranes for Optimal System Performance.

Dosing Pump Repairs: Fixing issues with Dosing Pumps and Related Components.

Pump Erection and Commissioning: Seamless Installation and Commissioning of Pumps.

Expert Support: Specialized Technicians Provide Reliable and Professional Service.

Benefits of Industrial RO Systems

Increased Efficiency: Regular maintenance ensures optimal system performance.

Minimized Downtime: On-site service reduces disruptions to your operations.

Prolonged Equipment Life span: Routine care and repairs extend the life of your system.

Quality Assurance: Ensures consistent water quality with precise testing and cleaning.

Expert Support: Specialized technicians provide reliable and professional service.

Evaporator

Sophisticated Systems Integrating All Components of a Thermal Separation Process Plant, Utilizing Various Types of Evaporators and Heat Treatment, to Achieve Maximum Energy Efficiency, Sustainability, and Economic Viability in Industrial Processes. Multiple Effect Evaporator System and Our Product is Made Up of Good Quality. Multiple Effect Evaporator System Led by the Team of Efficient Professionals, We Are Able to Offer Multiple Effect Evaporator System to Our Clients.

These Plants are Made Using High-Quality Raw Component in Tandem With International Quality Standards. Owing to their Easy Installation, Rugged Construction and Longer Functional Life, Our Evaporator Plants are Highly Demanded in the Market.



Supplying of water Treatment plants

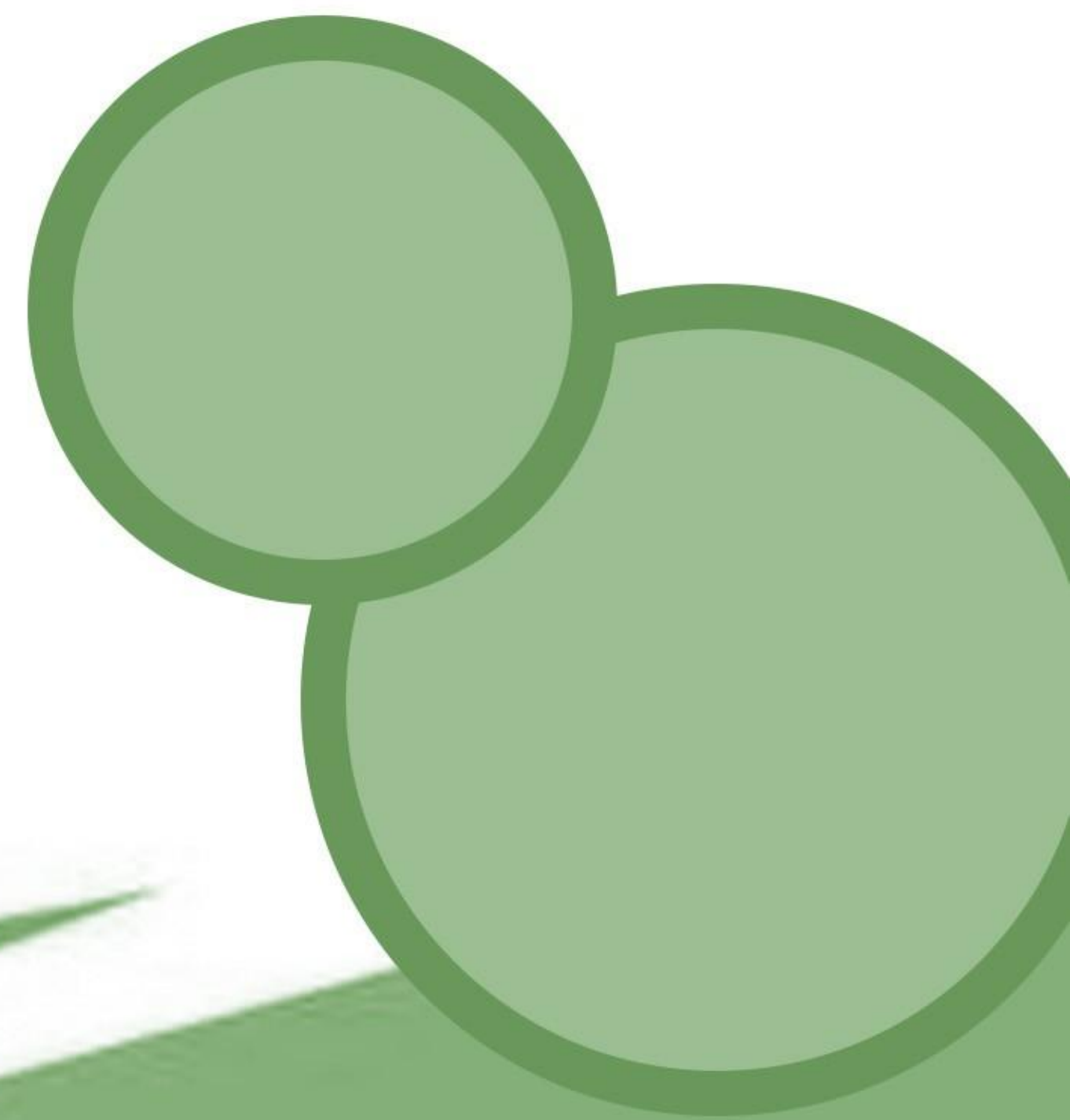
Raw Water Treatment is a Process that Modifies and Improves the Quality Of Water to Make it Suitable for Specific Uses. Viz., Residential, Commercial and Industrial Uses. Water Treatment and Filtration Processes can Significantly vary Based On the raw Water Characteristics and the Quality Requirements of the Output Water.

Raw Water Treatment Plants Alter the Properties of water by Removing Contaminants or Reducing their Concentration so that the treated water becomes fit for the intended end-use.

Water Treatment and Filtration systems are Designed, based on the Source and Characteristics of the Water, for removal Or Reduction of specific Constituents / Contaminants Presents in the water and Deliver the Guaranteed Output Quality as per WHO(World Health Organization)Standards or the Local Standards or the Specific Standards as required by the customers / client Organizations.

Our key Equipment's product

- **Hydrodynamic Diffusor**
- **Sludge Dewatering Machine**
- **Molecular Deactivation System**
- **Hydracell High Pressure Pump**



Hydrodynamic Diffusor

The Hydrodynamic Mixers are Constructed of Engineering Plastics and Can be Used as High Volume Air Diffusers. Compressed Air Enters at the Bottom of the Diffuser Assembly Through An Ejector Device Creating Vacuum Which Draws in Large Amount of Water Through the Aerator Body.

Volume of Activated Sludge Sucked into the Aerator is about 1.3 Times than the Air Supplied Because of Strong Negative Pressure Created in the Ejector Assembly. Air Discharge Opening is About 30mm and so Operated without Any Clogging issues Even in Liquid with Large Particles.



Dewatering System Wave Separator

The Wave Separator is a continuous solid liquid separation equipment and is used to remove water from liquid waste water residuals and produce a non-liquid material referred to as “cake”.

The clog-free automatic liquid-to-solid waste separator dewateres conditioned sludge on a self-cleaning wedge wire belt. This static belt is cleaned by a unique set of rotating oval shape plates.

After the drainage and thickening zone, the thickened sludge passes a dewatering zone which consists of an adjustable plate, actuated manually or by pneumatic cylinder.

The unique self-cleaning dewatering and conveying system features an oval plate separation and transfer structure that prevents clogging and permits automatic continuous operation that handles oily and fibrous material with ease.



Molecular Deactivation System

(Deactivation of Hardness, Silica, Fouling for RO Membranes)

Molecular Deactivation System that Prevent Choking, Fouling in Membrane Surfaces and Scaling in GI, CPVC, PVC Pipes. It's a Nano Catalytic Based Technology, Which is Designed as a Permanent Fixture to the Existing Pipe Line that Removes Existing Scales, Algae in the Pipe Line. This also Prevents Formation of Any Scales Without the Use of Any Chemicals. Good Lathering is Obtained in Higher TDS Water.



Hydracell High Pressure Pump

Heavy-duty Industrial Pumps for the Processing Industries, Plus OEM, and Agricultural and Landscaping Applications. Can Save Approximately 30% to 50% on Initial Costs Because Hydra-Cell Uses Lower Horsepower Motors to Achieve the Same flow rate and pressure 135 bar as other pumps. Compact Design With Smaller Footprint Provides More Efficient Use of Floor Space. Operates at 85-90% Energy Efficiency to Reduce Operating Costs. Seal-less Design Reduces Maintenance and Repair Expenditures and Minimizes the Cost of Spare Parts Compared to Other Types of Pumps.



Our Clients





Abirami paper Mills



Contact us

☎ +91 94444 48981 / 044-4512 0307

✉ evergreenenviro.sales@gmail.com

🌐 www.evergreenenviro.in

📍 No.1, Vanasakthi Nagar, Kolathur,
Chennai - 600099.

Thank
you!